



Outdoor Antenna

For Large Outdoor Installations

Specification Data	
Job Name	
Type	
Catalog #	
Comments	

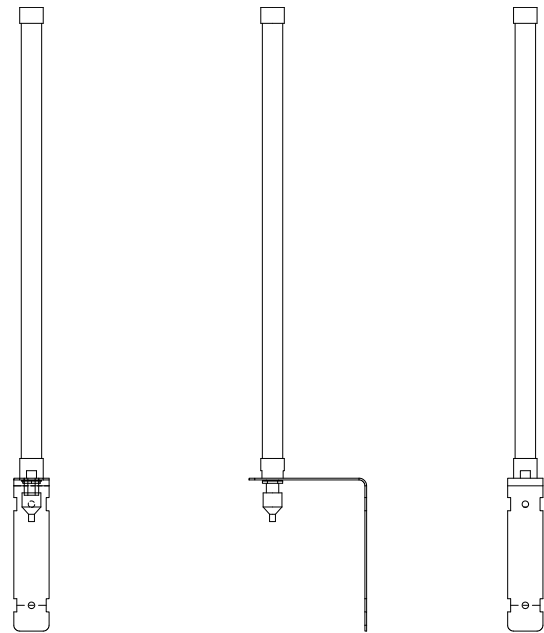
Product Overview

When installing a SimplySNAP gateway, it is essential to consider how the RF signal will connect to other devices in the SNAP mesh network. The Outdoor Antenna Kit helps ensure that the SimplySNAP gateway signal is amplified and propagated to other devices. This is important on large sites or sites with large physical obstructions between the SimplySNAP gateway and lighting controls. (Add something about how this improves/completes the mesh.)

The antenna can be bought by itself (a male-to-male RPSMA cable will still be needed), or as part of the outdoor antenna kit that comes with a 20-foot cable.

Kit Includes:

- Remote site-controller SNAP antenna, outdoor, straight with **built in mounting bracket**
 - » Pulse RO2048NM8dBi Gain
 - » Radome Omnidirectional CoLinear Antenna
 - » FCC Certified with Module in SS420/450
 - » UV Protection/IP-67 Protection
 - » 85C/185F
 - » Antenna Mast is 20”
 - » Bracket is 6.5” H x 5” L x 1.5” W (165.1 x 127 x 38.1 mm)
 - » Structural Loading to withstand 150 mph winds
 - » VSWR of 2:1
- 20 foot, RF Low Loss Cable, Male to Male RPSMA
- RP-SMA Female-to-Female Connector
- 50 Ohm Terminator
- Install Guide



Increase Range of SimplySNAP Gateway

Order #	Description
KIT-ANT420SM	Outdoor Antenna Kit
ANT-OSC-8.0-1	Remote site-controller SNAP antenna, outdoor, straight 8.0 dBi gain

To learn more, call or visit:
synapsewireless.com
or call (877) 982-7888